



SOTERIA



SOTERIA

Insurance Surveyors and  
Loss Assessors Private Limited

**Deliverance | Expertise | Assurance**

[www.ssla.global](http://www.ssla.global)



## We Are SOTERIA

The Greek word SOTERIA refers to deliverance from harm, founded on the same principles SOTERIA Insurance Surveyors & Loss Adjusters Pvt Ltd, IRDAI licensed professionally managed survey organization is dedicated in developing and providing tailored solutions in risk management, surveying and loss adjusting services locally and at major global locations. Our experts guide you through times of un-certainty where every claim is managed with **precision, integrity, and speed.**





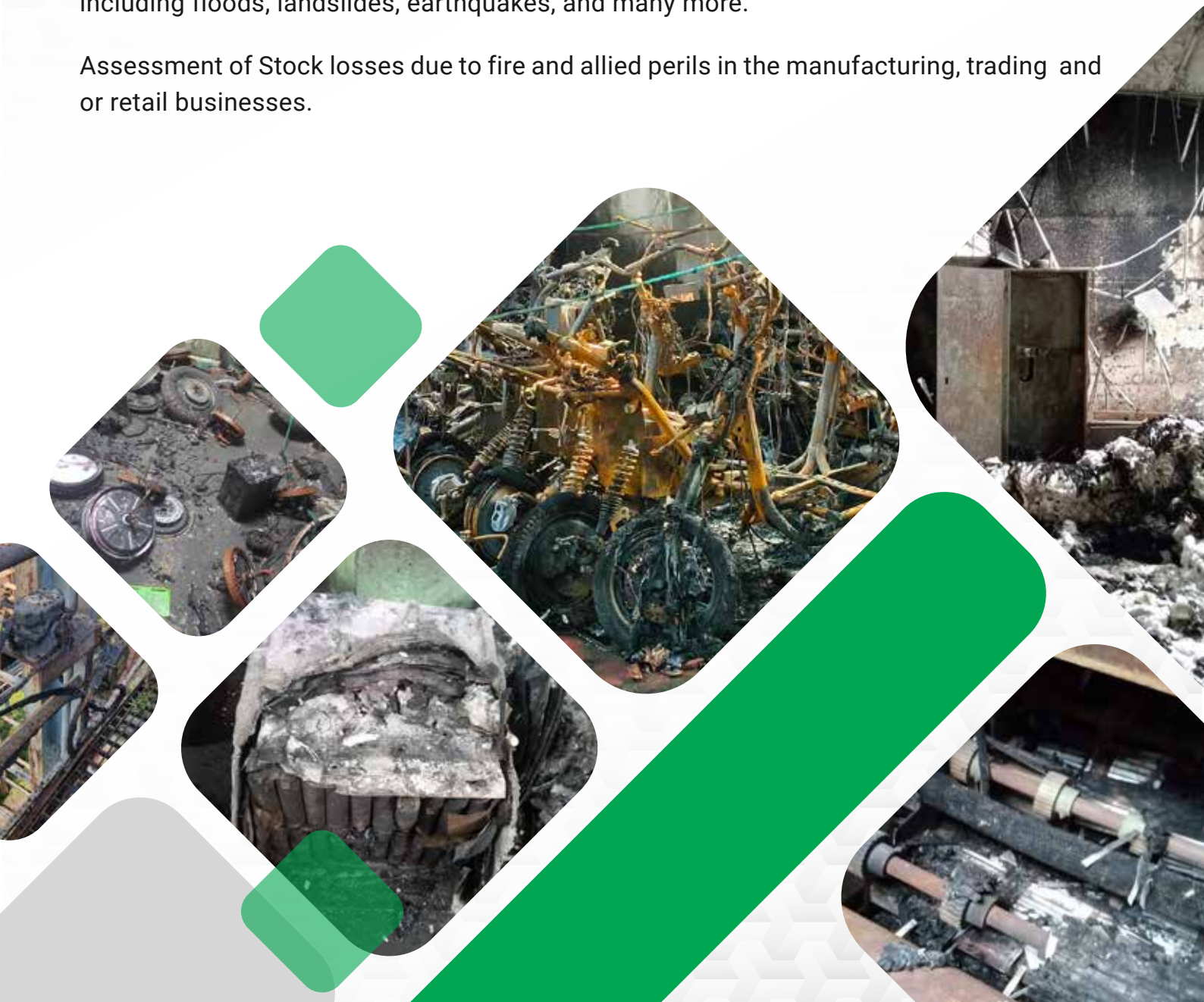
Our processes are designed to consistently fulfil the needs and aspirations of insurers and stake holders ensuring amicable, hassle-free, and seamless settlement of incurred losses. With every case we handle, we reaffirm our commitment of being a trusted partner in times of uncertainty—ensuring fair, transparent, and timely resolution of claims intimated.

**Trust, Transparency & Technical Excellence** sets **SOTERIA** apart from the crowd.

## Property & Fire Loss Assessment

Accurate, timely surveys of fire and property damage claims with full technical documentation. All types of fire damages to buildings, Plant & Machinery and allied perils including floods, landslides, earthquakes, and many more.

Assessment of Stock losses due to fire and allied perils in the manufacturing, trading and or retail businesses.



# Engineering Claims

---

Specialized assessments for industrial machinery breakdowns, electrical breakdown, erection damage CPM, CAR, EAR, wind mills, transformers, alternators, DG sets, gas turbines, steam turbines, equipment damage, and all other engineering-related losses.

## Liability & Miscellaneous Claims

---

Our team of financial experts comprising of qualified Chartered Accountants and Financial Analysts and surveyors proficiently handle liability, burglary, fidelity, Bankers Indemnity and other specialty lines losses in trend now a days.

## Marine Cargo & Transit Losses

---

Our marine team comprising of Master Mariners, Marine Engineers and seafaring professionals are engaged in the Inspection, assessment and valuation of cargo damaged during inland and international multimodal transit which may include skilful pilferages, non-deliveries, mysterious & unexplained losses, perishable goods, losses due to contamination & spillage, accidental damages as well as loss to containerised reefer & bulk cargo and container damage claims.





# Marine Hull & Offshore

At Soteria Marine and Offshore, we specialize in detailed marine surveys and practical offshore risk management. We are committed to giving Vessel Owners, Insurers, and Charterers clear-cut support and protection for their marine and offshore operations.



## Marine Surveys

Comprehensive marine assessments covering vessel inspections, cargo damage surveying, hull and machinery inspections and condition surveys



## Cargo Damage Inspections

Accurate assessments of cargo damage with a focus on quality control and loss prevention.



## Vessel Inspections

Thorough inspections of vessel loading and discharging, assuring compliance and safety.



## Accident Investigations & Damage Control

Expert investigation of marine accidents to ascertain causes and implement effective damage control measures.



## Liability Claims

Professional handling of various liability claims including freight forwarders, road hauliers, ship repairers, and more.



## Other Marine Services

Including towage surveys, yacht surveys, bunker surveys, draft surveys, on-hire/off hire surveys etc.

# Why Choose SOTERIA

---



## Pan-India Reach

We operate in key metro cities and Tier-2/3 hubs, ensuring timely local response.



## Certified Professionals

Licensed and IRDAI-accredited surveyors with decades of cumulative experience.



## Tech-Driven Processes

Digital claim reporting, photographic documentation, and real-time updates.



## Client-Centric Approach

Transparent communication, ethical practices, and tailor-made solutions.

## Our Clients Include

---

- ▶ Public & Private Sector Insurance Companies
- ▶ Global Re-Insurers
- ▶ Corporate Risk Managers
- ▶ Brokers & TPAs
- ▶ Transporters, Importers & Exporters, and Manufacturers, shipping cos and logistics firms, Maritime law firms and any one who might need an independent survey and assessment of loss.



# Projects Handled

---



Engineering Loss



Flood Loss



Fire Damage



Malicious Loss





Premises Risk  
Surveys



Yacht Claims - Stranding  
of Pleasure Craft, Salvage  
and Repair Monitoring



Cargo Damage Surveys  
Leaking Hazardous Cargo



Fire Damage to Plywood  
Cargo - G.A. Claim



Sea-fastening Inspections  
and Load Out Surveys of  
Project Cargo



Fire Damage - Property  
Claim





Rain Damage to Facility  
- Property Claim



Hull Condition Survey  
for Insurance Renewal



Fire Incident -  
Yacht Claim



Incident/Damage  
Investigation - Vessel in  
Contact with Another Vessel



Cargo Removal and  
Lightening of Barge



Towing the Vessel to  
the Port after Bombing  
Incident



Cargo Discharge and  
Condition Survey



Vessel Condition  
Survey



Cargo Damage Surveys  
– Oil Well Equipment –  
Pile Sleeve



Loading/Unloading  
Surveys



Container Inspection



Lashing Surveys





**SOTERIA**

[www.ssla.global](http://www.ssla.global)

# Contact Us



## India Operations

### Delhi NCR & Northern RO (Registered Office)

Unit No: 822b, Tower B4, Spaze I,  
Tech Park Sec 49, Gurgaon,  
Haryana 122018 ( Covers Delhi NCR,  
Lucknow, Prayagraj, Kanpur, Benaras,  
Agra, Jaipur, J&K )

### Mumbai HO & Western RO (Head Office)

310-312, 3rd Floor, Tower2, IMPERIA,  
JP NORTH, MIRA ROAD (E),  
Mumbai 401017.(Covers Mumbai (HO)  
& Rest of West – Pune, Indore,  
Ahmedabad and ports of south Gujrat)

### Chennai & Southern RO (Regional Office)


Old No.1, New No. 4,  
9th Cross Street, New Colony,  
Chromepet, Chennai -600 044  
(Covers Tamil Nadu,  
Bangalore, Hyderabad, Kochi )

 **Email Us**  
surveys@ssla.global

 +91 9841077239  
+91 9841284204

### Kolkata & Eastern RO (Regional Office)


617, 6th Floor, Diamond Prestige,  
41, Acharya Jagadish Chandra Bose  
Road, Kolkata 700 016.  
(Adjacent to Mullick Bazar Park  
Street Crossing & Missionaries  
of Charity - Mother Teresa House)

 **Email Us**  
opskolkata@ssla.global

## Affiliated Offices


### UAE

Fahidi Heights, 16-05,  
Near Central Mall,  
Dubai UAE

 +971 50 802 1908  
+971 04 348 9127

### UK

Solent Business Centre  
Millbrook Road West Southampton  
SO15 0HW United Kingdom

 +44 79 439 73791



[www.ssla.global](http://www.ssla.global)